

# Human FGF basic Protein

Cat. No. FGF-HE001

## Description

<b>Source</b>	Recombinant Human FGF basic Protein is expressed from E.coli without tag It contains Pro143-Ser288.
<b>Accession</b>	P09038-4
<b>Molecular Weight</b>	The protein has a predicted MW of 16.5 kDa same as Bis-Tris PAGE result.
<b>Endotoxin</b>	Less than 0.02 EU per µg by the LAL method.
<b>Purity</b>	> 95% as determined by Bis-Tris PAGE

## Formulation and Storage

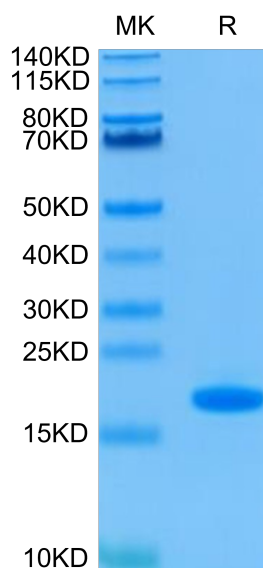
<b>Formulation</b>	Lyophilized from 0.22 µm filtered solution in PBS (pH 7.4). Normally 8% trehalose is added as protectant before lyophilization.
<b>Reconstitution</b>	Centrifuge the tube before opening. Reconstituting to a concentration more than 100 µg/ml is recommended. Dissolve the lyophilized protein in distilled water.
<b>Storage</b>	-20 to -80°C for 12 months as supplied from date of receipt. -80°C for 3 months after reconstitution. Recommend to aliquot the protein into smaller quantities for optimal storage. Please minimize freeze-thaw cycles.

## Background

FGF basic is a member of the FGF family of at least 23 related mitogenic proteins which show 35-60% amino acid conservation. FGF acidic and basic, unlike the other members of the family, lack signal peptides and are apparently secreted by mechanisms other than the classical protein secretion pathway.

## Assay Data

### Bis-Tris PAGE



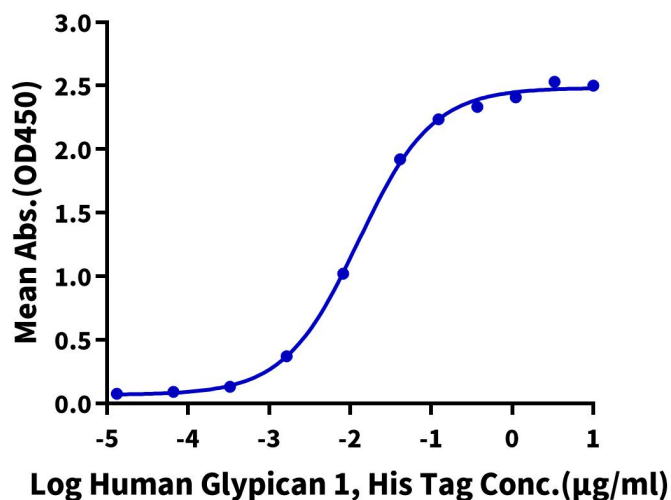
Human FGF basic on Bis-Tris PAGE under reduced condition. The purity is greater than 95%.

### ELISA Data

Assay Data

**Human FGF basic, No Tag ELISA**

0.05µg Human FGF basic, No Tag Per Well

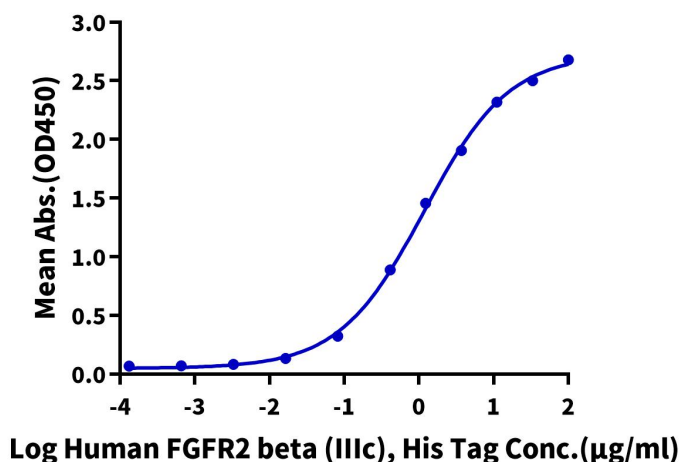


Immobilized Human FGF basic at 0.5 µg/ml (100 µl/Well) on the plate. Dose response curve for Human Glypican 1, His Tag with the EC50 of 12.6 ng/ml determined by ELISA (QC Test).

ELISA Data

**Human FGF basic, No Tag ELISA**

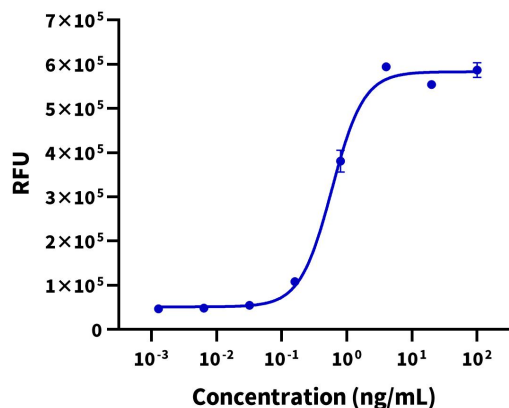
0.5µg Human FGF basic, No Tag Per Well



Immobilized Human FGF basic, No Tag at 5 µg/ml (100 µl/well) on the plate. Dose response curve for Human FGFR2 beta (IIIc), His Tag with the EC50 of 1.18 µg/ml determined by ELISA.

Cell Based Assay

**Recombinant Human FGF basic Bioactivity**



Measured in a cell proliferation assay using BALB/c 3T3 mouse embryonic fibroblasts. The ED50 for this effect is 0.1 - 0.6 ng/ml (QC Test).